

New functions for the CE8000 series added in Ver.1.4 of Graphtec Studio 2 and Cutting Master 5

1. Email notification option for continuous operation using barcodes

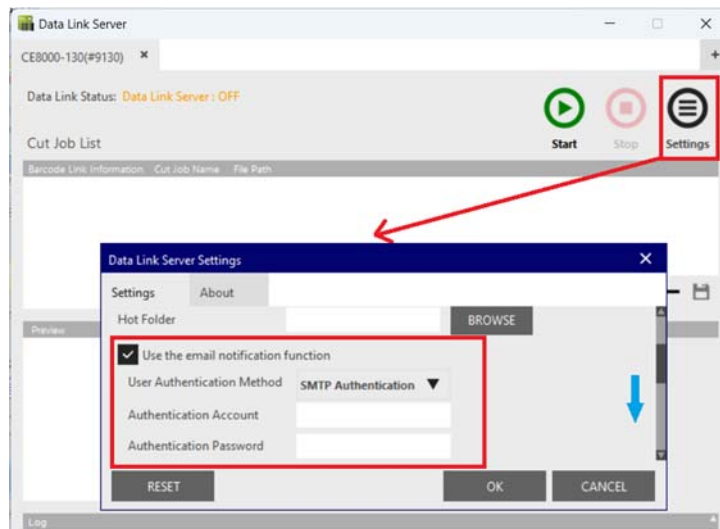
Supported models:

CE8000 series

Description:

Specify the [Use the email notification function] option on the Data Link Server settings screen and set the related items.

When continuous operation using barcodes stops, an email will be sent to notify you of this.



2. Automatic search option for the first mark when printing and cutting using registration marks

Supported models:

CE8000 series

Description:

Specify the [Scanning start position of Registration Marks] option in the [Registration Mark] tab on the cut screen.

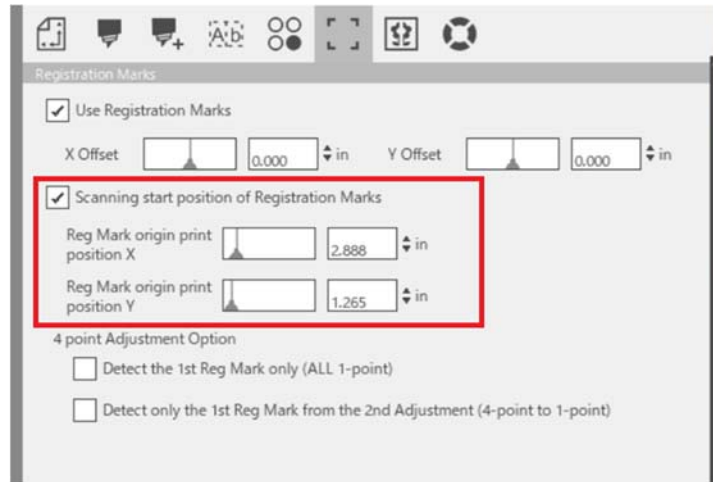
When performing print and cut using registration marks, the first mark is automatically searched for according to [Reg Mark origin print position X (or Y)].

Note:

The cutter operates on the assumption that the media is set in the position specified in the instruction manual.

In addition, the default setting for [Reg Mark origin print position X (or Y)] is

the relative position from the edge of the design document to the first mark.
If the media is not set in the expected position, you will need to adjust this setting as necessary.



3. Pre-feed option before cutting roll media

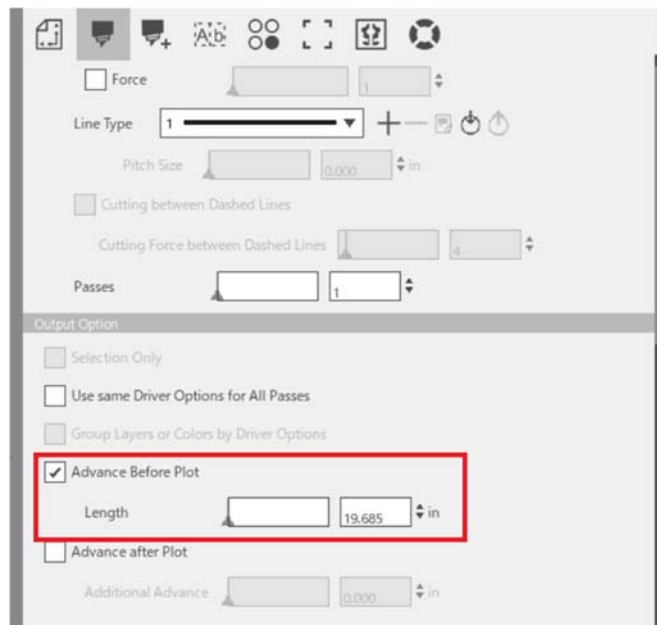
Supported models:

CE8000 series

Description:

Specify the [Advance Before Plot] option on the [Options] tab of the cutting screen.

Before cutting, the roll media will be pre-feed according to the specified length.



4. Firmware update notification and download update function

Supported models:

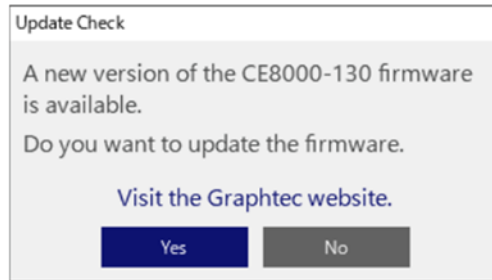
All supported models (excluding CE LITE-50)

Description:

When the Remote Panel Utility screen is launched, a notification message will be displayed if a new version of the firmware is available.

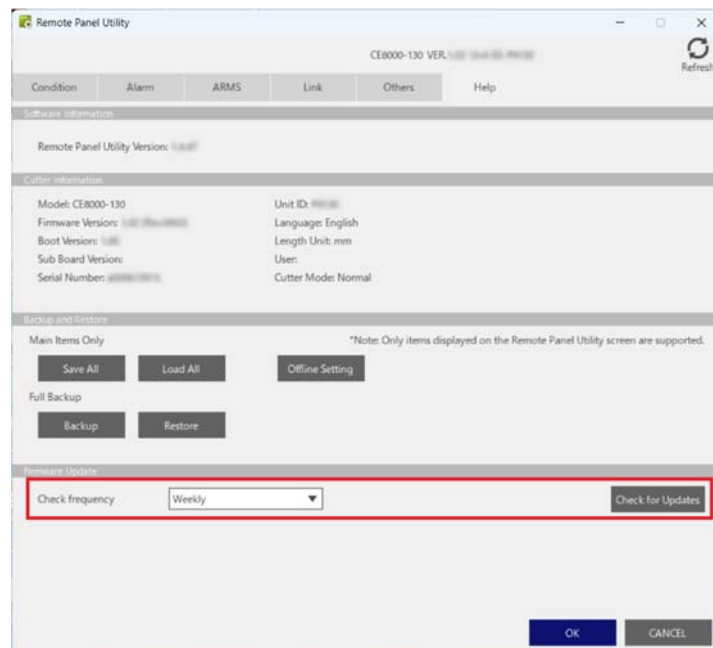
If the cutter is connected via USB, the firmware file will be downloaded and the cutter will be updated.

If connected via LAN, you will be directed to a website where the new firmware file is available.



You can specify how often to check for new firmware releases by selecting [Check frequency] on the [Help] tab of the Remote Panel Utility screen.

You can also manually check for new firmware releases by clicking the [Check for Updates] button.



Note:

While updating the firmware, don't turn OFF the power for the cutting plotter, and don't unplug the USB cable from the PC and the cutting plotter.

End