

New wireless LAN setting function for the CE8000 series added in Ver.1.10 of Graphtec Studio 2 and Cutting Master 5

OPSCMGS-AUM2-151

Overview

A wireless LAN setting function has been added to Graphtec Studio 2 and Cutting Master 5 version 1.10.

This section explains how to set up wireless LAN on a cutting plotter that has just been purchased and is not yet connected to a PC.

(This document uses Windows 11 screens for explanation.)

Supported Models and Versions

CE8000 Series: Version 1.16 or later

CE8000-40+ASF1: Version 1.16 or later

CE8000-130AP: Version 1.09 or later

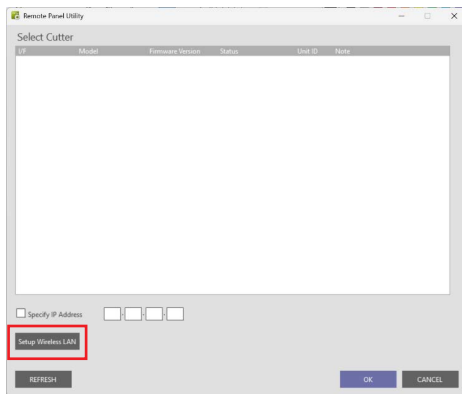
Preparations

Graphtec Studio 2 or Cutting Master 5 version 1.10.36 or later must already be installed on a PC running Windows or macOS.

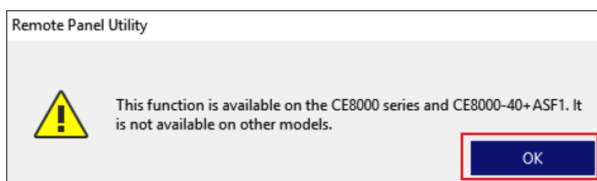
Operating Procedure

1. For Windows OS
Open Graphtec Studio 2 or Cutting Master 5 from the Start menu and launch the Remote Panel Utility.
For macOS
Open the [Graphtec Studio 2] or [Cutting Master 5] folder in the [Applications] - [Graphtec Corporation] folder and launch the Remote Panel Utility.

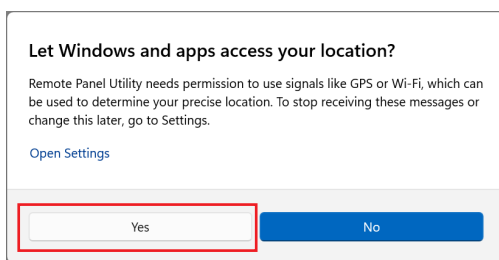
2. When the "Select Cutter" screen appears, click the "Setup Wireless LAN" button without selecting any cutting plotter.



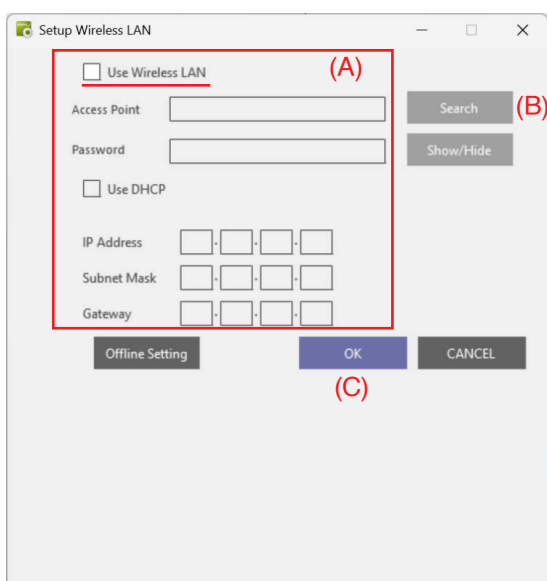
3. When the following message appears, click OK.



4. If prompted to grant permission to access location information, select "Yes."



5. When the "Setup Wireless LAN" screen appears, enter the appropriate settings. First, check "Use Wireless LAN".



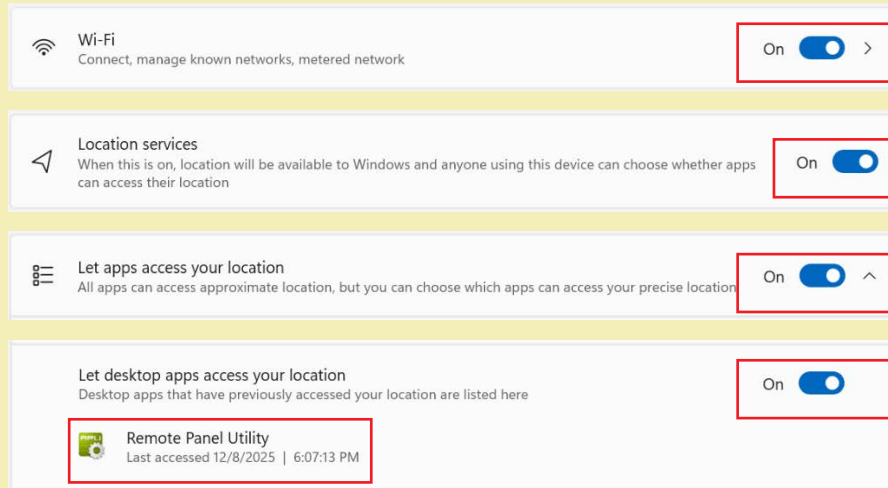
⚠ CAUTION

(A) Since the cutting plotter's wireless LAN only supports 2.4GHz, you must also set the "Access Point" to a 2.4GHz SSID.

If the "Search" button is grayed out and cannot be clicked, manually enter the SSID in "Access Point."

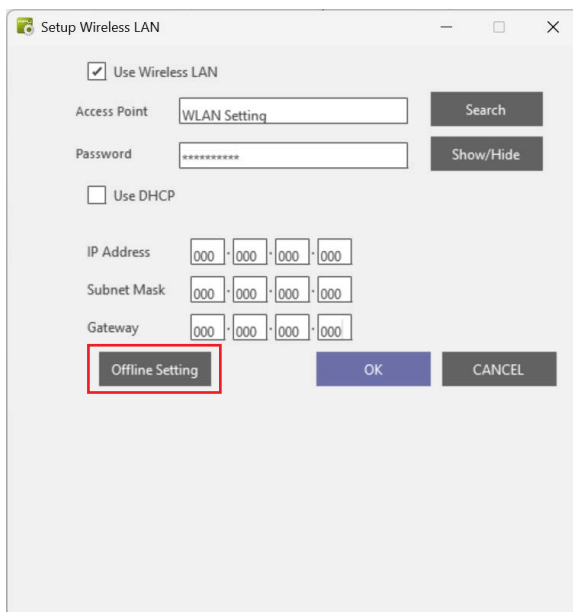
(B) To use the "Search" button to display a list of access points recognized by your PC, all of the following settings must be enabled in Windows OS and the Remote Panel Utility must be allowed to access location information.

The corresponding settings must also be enabled in macOS.

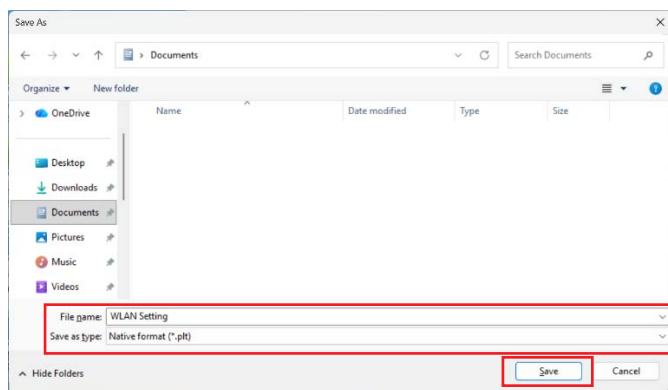


(C) The "OK" button is enabled when you open the "Setup Wireless LAN" screen by specifying a cutting plotter that is already connected to your PC.

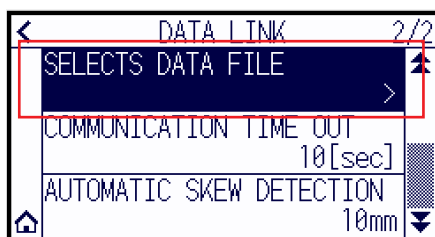
6. After entering the settings, click the "Offline Setting" button.



7. When the "Save As" screen appears, specify a file name and save the file as a PLT file.



8. Save the PLT file from step 7 to a USB memory stick.
9. Insert the USB memory stick into the cutting plotter for which you want to setup the wireless LAN.
10. Open the "SELECTS DATA FILE" menu on the cutting plotter's operation panel and run the PLT file saved to the USB memory in step 8.
For detailed instructions, refer to steps 1 to 9 of "12.2 Data Link with USB Memory" in the CE8000 Series USER'S MANUAL.
(Or refer to steps 1 to 6 of "6.4 Offline Output from USB Memory" in the CE8000-130AP USER'S MANUAL.)



11. Once the wireless LAN setup process is complete and the cutting plotter has restarted, the setup is complete.



End